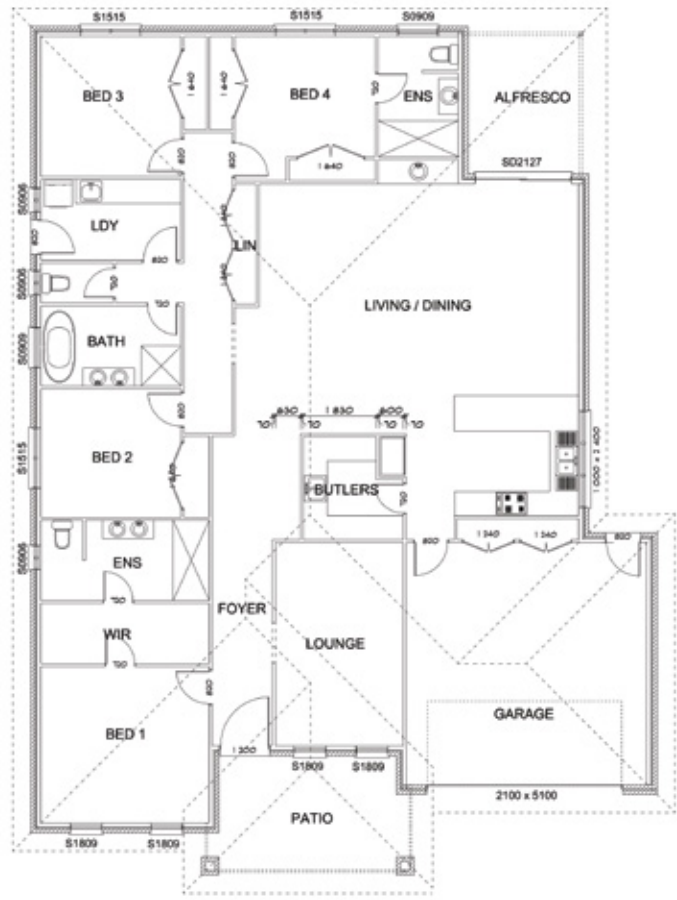




**OPEN
FAMILY
LIVING**

DFB 8-33



FEATURES

- Open-plan family home
- Large, open kitchen, dining and living area
- Double garage
- Kitchen with Butler's Pantry
- 2 bedrooms with an ensuite

DETAILS	
Living	226.6 Sqm
Garage	39.7 Sqm
Patio	15.0 Sqm
Alfresco	11.0 Sqm
Total	292.3 Sqm

DANIEL FINN BUILDER
 PTY LTD | LIC. 282711C
 From Concept to FINNish

Mob: 0408 373 323 | daniel@danielfinnbuilder.com.au
 291 Stewart St, Bathurst NSW 2795

DISCLAIMER: PHOTOGRAPHS & ILLUSTRATIONS ARE INTENDED TO BE A VISUAL AID ONLY. DANIEL FINN BUILDER PTY LTD (LIC NO: 282711C) GIVES NO WARRANTY AND MAKES NO REPRESENTATION TO THE ACCURACY OR SUFFICIENCY OF ANY DESCRIPTION, ILLUSTRATION, PHOTOGRAPH OR STATEMENT CONTAINED IN THIS BROCHURE AND ACCEPTS NO LIABILITY FOR ANY LOSS SUFFERED BY ANY PERSON WHO RELIES ON EITHER WHOLLY OR PARTLY UPON THE INFORMATION PRESENTED. ALL INFORMATION IS SUBJECT TO CHANGE WITHOUT NOTICE. © COPYRIGHT DANIEL FINN BUILDER PTY LTD (LIC NO: 282711C)